

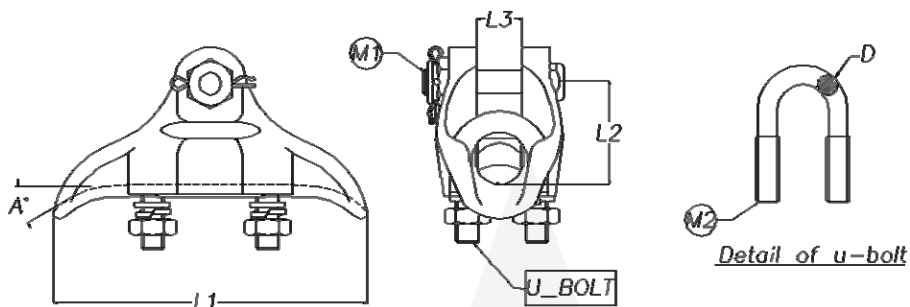


EARTH WIRE FITTINGS

ALDA

SUSPENSION CLAMPS

For aluminum earth wires



No.	Part No.	Conductor Range (mm)	Dimensions (mm)				A (degree)	M1	M2	Min. Breaking Strength (kN)	Min. Tightening Torque (Nm)	Weight (Kg)
			L1	L2	L3	D						
1	SU.23.300.X	Ø10 ~ Ø21	190	60	21	12.5	20	16	14	70	60	1.2

ALDA

ALDA MANUFACTURING CO.

No. 7, Maryam Alley, Hakim Highway, Tehran-Iran ■ Postal Code: 1473666751

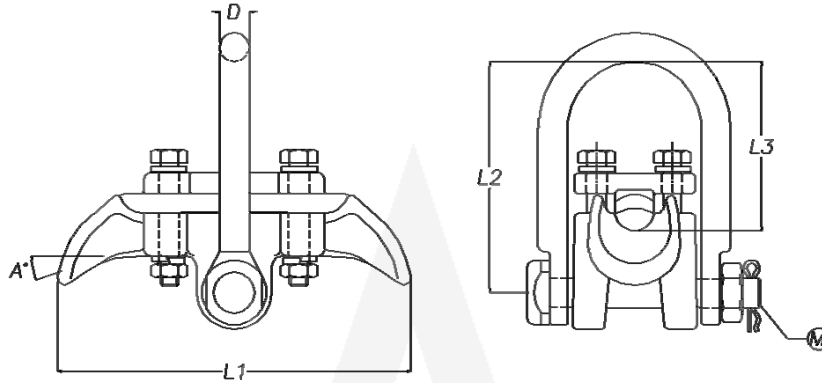
Tel: (+9821) 44003214-6 ■ Fax: (+9821) 44003217

Email: Info@AldaCompany.com

SUSPENSION CLAMPS

For galvanized earth wires

Type 1

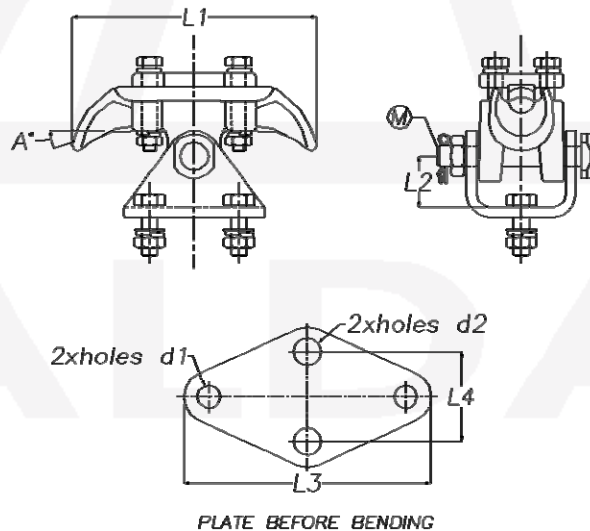


No.	Part No.	Conductor Range (mm)	Dimensions (mm)				A (degree)	M	Min. Breaking Strength (kN)	Min. Tightening Torque(Nm)	Weight (Kg)
			L1	L2	L3	D					
1	SU.18.01.ST.X	Ø12 ~ Ø21.6	191	125	91.5	16	20	16	80	50	2.75

SUSPENSION CLAMPS

For galvanized earth wires

Type 2



No.	Part No.	Conductor Range (mm)	Dimensions (mm)						A (degree)	M	Min. Breaking Strength (kN)	Min. Tightening Torque(Nm)	Weight (Kg)
			L1	L2	L3	L4	d1	d2					
1	SU.18.02.ST.X	Ø12 ~ Ø21.6	191	40	194	70	18	22	20	16	60	50	3.23
2	SU.18.03.ST.X	Ø12 ~ Ø21.6	191	40	194	70	18	18	20	16	60	50	3.24
3	SU.18.04.ST.X	Ø12 ~ Ø21.6	191	40	194	50	18	18	20	16	60	50	3.17

ALDA MANUFACTURING CO.

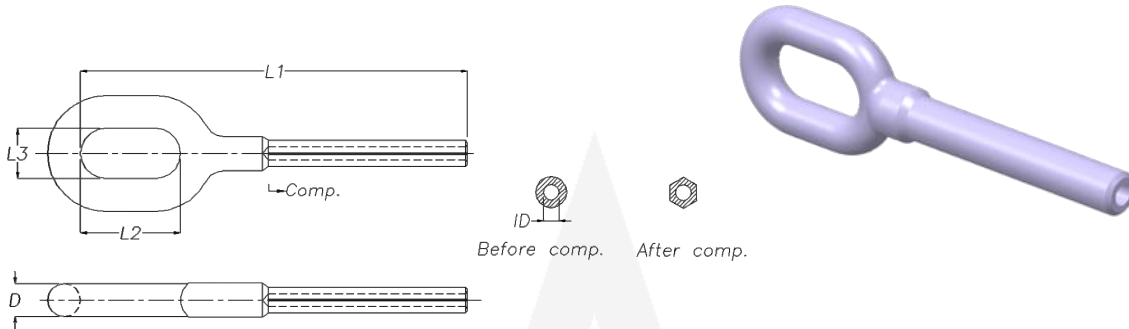
No. 7, Maryam Alley, Hakim Highway, Tehran-Iran ■ Postal Code: 1473666751

Tel: (+9821) 44003214-6 ■ Fax: (+9821) 44003217

Email: Info@AldaCompany.com

COMPRESSION DEAD END CLAMPS

For alumoweld & galvanized earth wires



No.	Part No.	Conductor	Dimensions (mm)					Weight (Kg)
			L1	L2	L3	D	ID	
1	DO.13.65	PARTRIDGE CORE	194	50	25	16.5	6.5	0.44
2	DO.17.85.3	HAWK CORE	190	50	25	16.5	8.5	0.52
3	DO.17.87.2	LYNX CORE	190	50	25	16.5	8.7	0.5
4	DO.19.102.5	CANARY CORE & 7NO.8 (Ø9.8)	194	50	25	16.5	10.2	0.57
5	DO.21.105	3NO.5 (Ø9.96)	194	50	25	16.5	10.5	0.58
6	DO.21.110.5	CURLEW CORE	194	50	25	16.5	11.2	0.55
7	DO.23.115	7NO.7 (Ø11) & TEAL CORE 70mm ² (Ø 10.8)	194	50	25	16.5	11.5	0.65
8	DO.23.120	80 mm ² (Ø11.5)	194	50	25	16.5	12	0.65
9	DO.25.125.1	MARTIN CORE (Ø12.05) & 411mm ² (Ø12)	194	50	25	16.5	12.5	0.68
10	DO.25.130	7NO.6 (Ø12.34)	194	50	25	16.5	13	0.73

Aluminum sleeves shall be provided whenever the clamp is used for alumoweld earth wires.

ALDA MANUFACTURING CO.

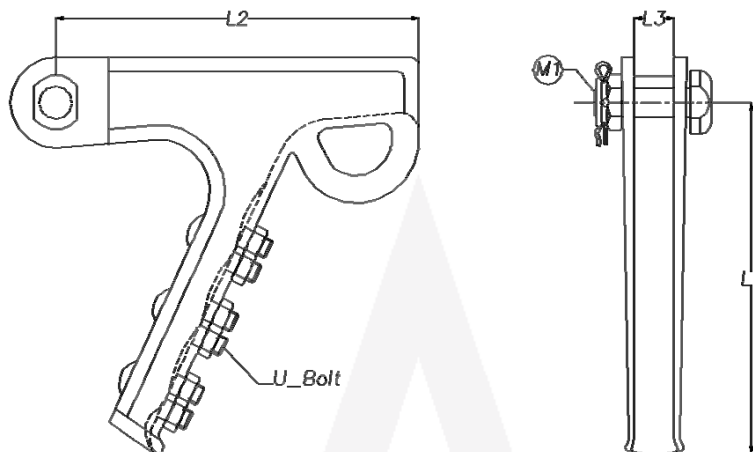
No. 7, Maryam Alley, Hakim Highway, Tehran-Iran ■ Postal Code: 1473666751

Tel: (+9821) 44003214-6 ■ Fax: (+9821) 44003217

Email: Info@AldaCompany.com

BOLTED TYPE STRAIN CLAMPS

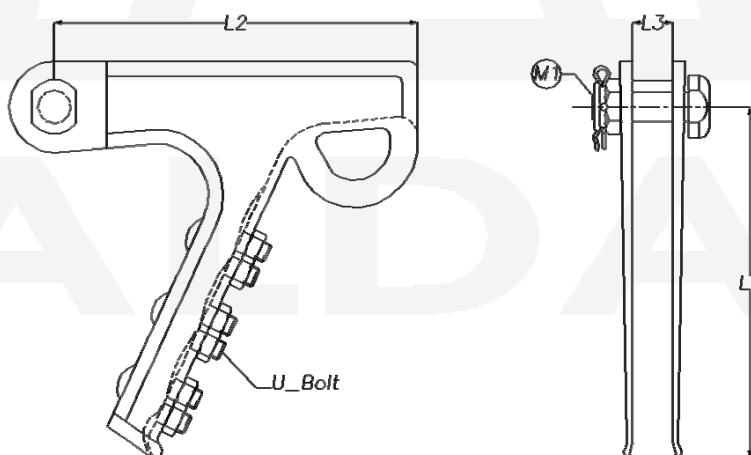
For alumoweld earth wires



No.	Part No.	Conductor Range (mm)	Dimensions (mm)			M1	U Bolt	Weight (Kg)
			L1	L2	L3			
1	DEN.10.01.AI	Ø8 ~ Ø21	128	200	22	16	M12	1.6

BOLTED TYPE STRAIN CLAMPS

For galvanized earth wires



No.	Part No.	Conductor Range (mm)	Dimensions (mm)			M1	U Bolt	Weight (Kg)
			L1	L2	L3			
1	DEN.10.01.ST	Ø8 ~ Ø21	128	200	22	16	M12	3.145

ALDA MANUFACTURING CO.

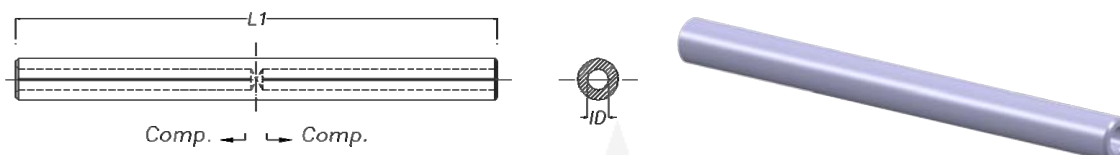
No. 7, Maryam Alley, Hakim Highway, Tehran-Iran ■ Postal Code: 1473666751

Tel: (+9821) 44003214-6 ■ Fax: (+9821) 44003217

Email: Info@AldaCompany.com

MID SPAN JOINTS

For alumoweld & galvanized earth wires



No.	Part Name	Dimensions (mm)		Weight (Kg)	Conductor
		L1	ID		
1	MS.06.00	180	6.5	0.14	PARTRIDGE CORE
2	MS.05.09.4	200	8.5	0.27	HAWK CORE
3	MS.04.11.1	200	8.7	0.26	LYNX CORE
4	MS.08.03.4	230	10.2	0.31	CANARY CORE & 7 NO.8 (Ø9.8)
5	MS.09.96.1	220	10.5	0.45	3 NO.5 (Ø9.96)
6	MS.08.15.4	240	11.2	0.47	CURLEW CORE
7	MS.04.20	200	11.5	0.54	7 NO.7 (Ø11) & TEAL CORE 70mm ² (Ø10.8)
8	MS.12.05	220	12.5	0.64	MARTIN CORE

Aluminum sleeves shall be provided whenever the clamp is used for alumoweld earth wires.

ALDA

ALDA MANUFACTURING CO.

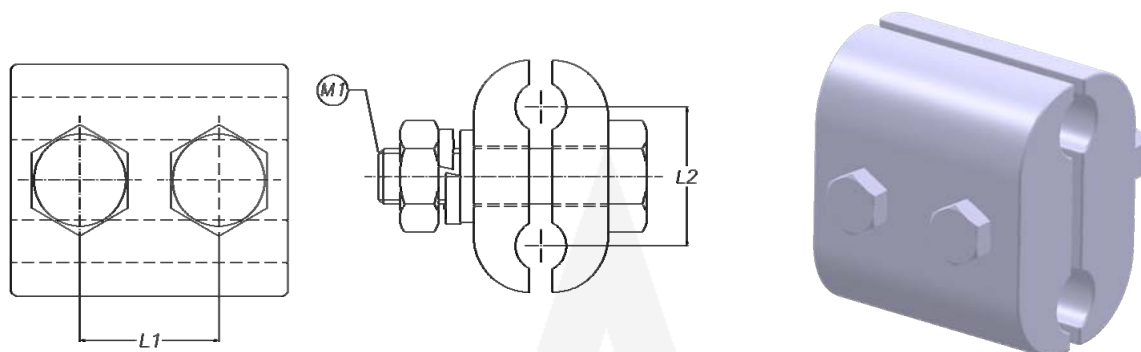
No. 7, Maryam Alley, Hakim Highway, Tehran-Iran ■ Postal Code: 1473666751

Tel: (+9821) 44003214-6 ■ Fax: (+9821) 44003217

Email: Info@AldaCompany.com

PARALLEL GROOVE CLAMPS

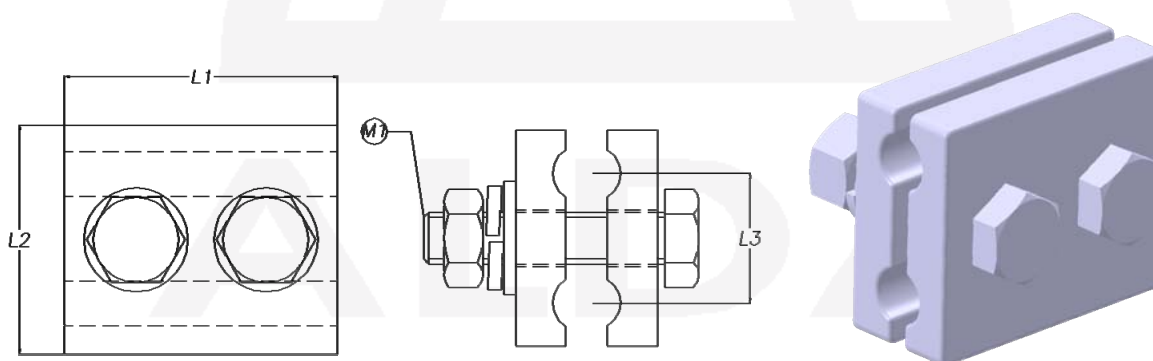
For aluminum & alumoweld earth wires



No.	Part No.	Conductor Range (mm)	Dimensions (mm)			M1	Weight (Kg)
			L1	L2			
1	PG.90.90.3	Ø8 ~ Ø12.5	30	30	10	0.25	

PARALLEL GROOVE CLAMPS

For copper earth wires



No.	Part No.	Conductor Range (mm)	Dimensions (mm)			M1	Weight (Kg)
			L1	L2	L3		
1	PG.12.12.BR	Ø7.5 ~ Ø12.5	60	60	30	12	0.71

ALDA MANUFACTURING CO.

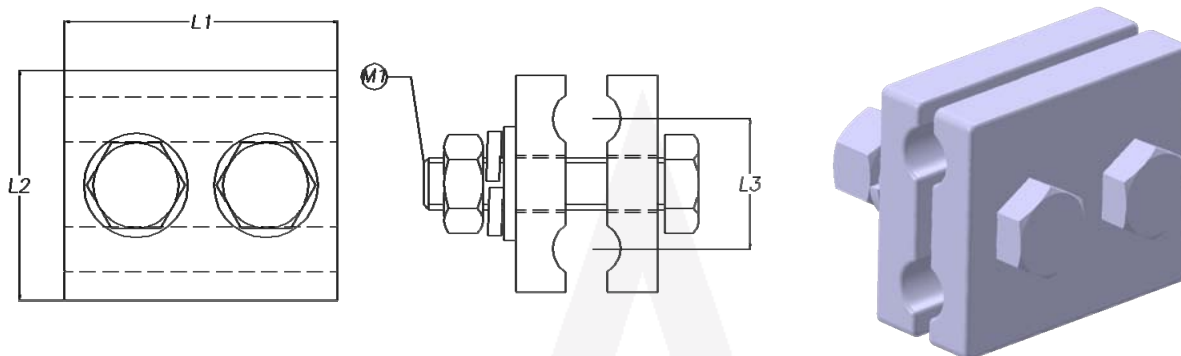
No. 7, Maryam Alley, Hakim Highway, Tehran-Iran ■ Postal Code: 1473666751

Tel: (+9821) 44003214-6 ■ Fax: (+9821) 44003217

Email: Info@AldaCompany.com

PARALLEL GROOVE CLAMPS

For galvanized earth wires



No.	Part No.	Conductor Range (mm)	Dimensions (mm)			M1	Weight (Kg)
			L1	L2	L3		
1	PG.12.12.ST	Ø8 ~ Ø12.5	60	50	30	12	0.63

ALDA MANUFACTURING CO.

No. 7, Maryam Alley, Hakim Highway, Tehran-Iran ■ Postal Code: 1473666751

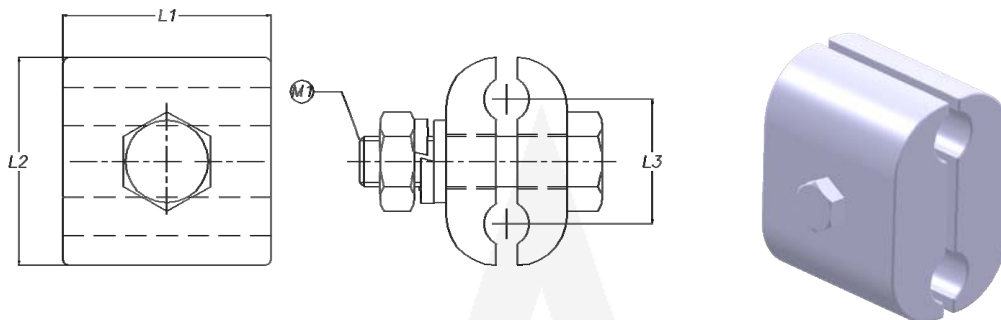
Tel: (+9821) 44003214-6 ■ Fax: (+9821) 44003217

Email: Info@AldaCompany.com

TOWER BONDING CLAMPS

For aluminum & alumoweld earth wires

Type 1

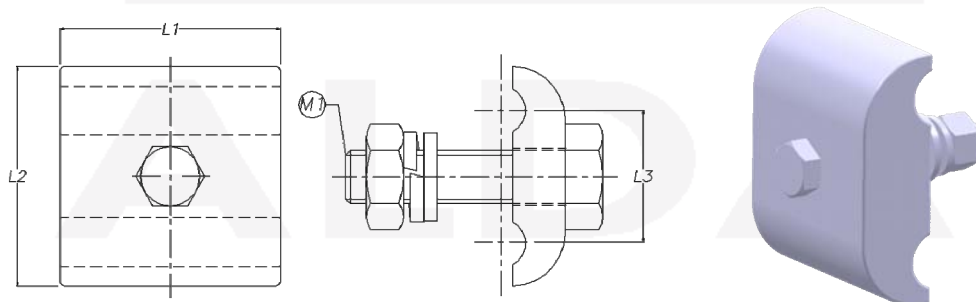


No.	Part No.	Conductor Range (mm)	Dimensions (mm)			M1	Weight (Kg)
			L1	L2	L3		
1	PG.80.80.AL	Ø7.5 ~ Ø12.5	50	50	30	10	0.18

TOWER BONDING CLAMPS

For aluminum & alumoweld earth wires

Type 2

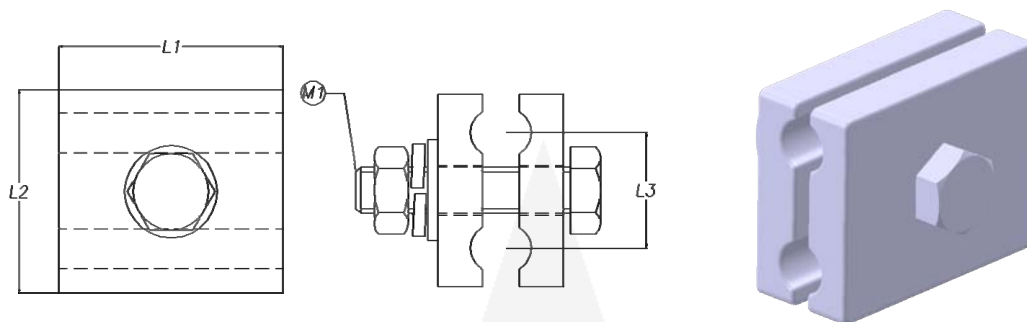


No.	Part No.	Conductor Range (mm)	Dimensions (mm)			M1	Weight (Kg)
			L1	L2	L3		
1	PG.80.80.1.AL	Ø8.5 ~ Ø10.8	50	50	30	12	0.15

TOWER BONDING CLAMPS

For copper earth wires

Type 1

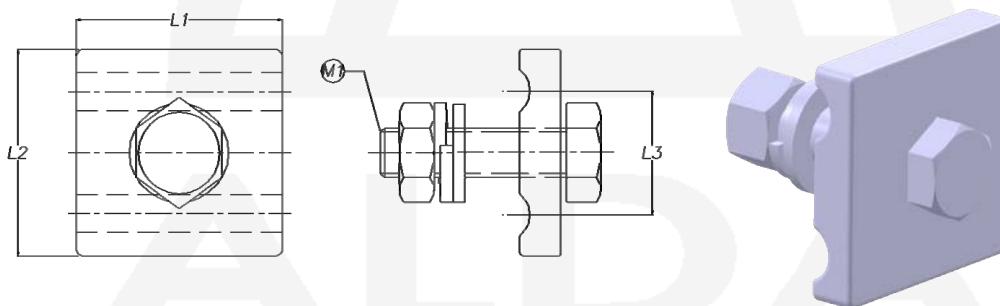


No.	Part No.	Conductor Range (mm)	Dimensions (mm)			M1	Weight (Kg)
			L1	L2	L3		
1	PG.80.80.BR	Ø7.5 ~ Ø12.5	60	60	30	12	0.58

TOWER BONDING CLAMPS

For copper earth wires

Type 2

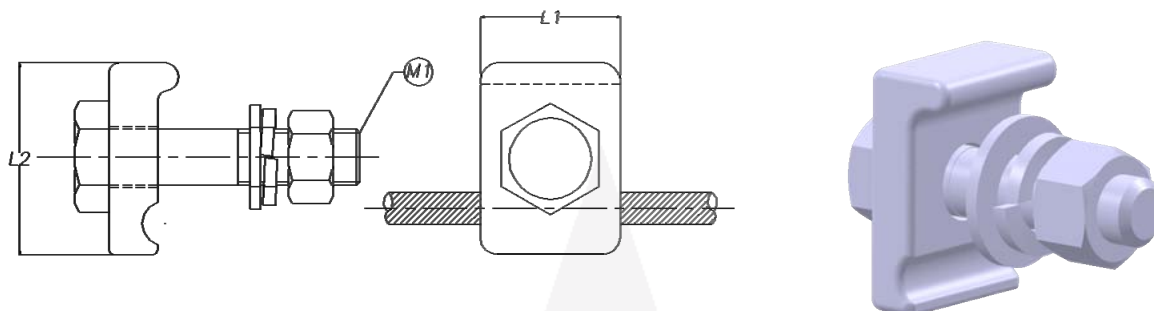


No.	Part No.	Conductor Range (mm)	Dimensions (mm)			M1	Weight (Kg)
			L1	L2	L3		
1	PG.80.80.1.BR	Ø7.5 ~ Ø12.5	60	60	30	12	0.33

TOWER BONDING CLAMPS

For copper earth wires

Type 3

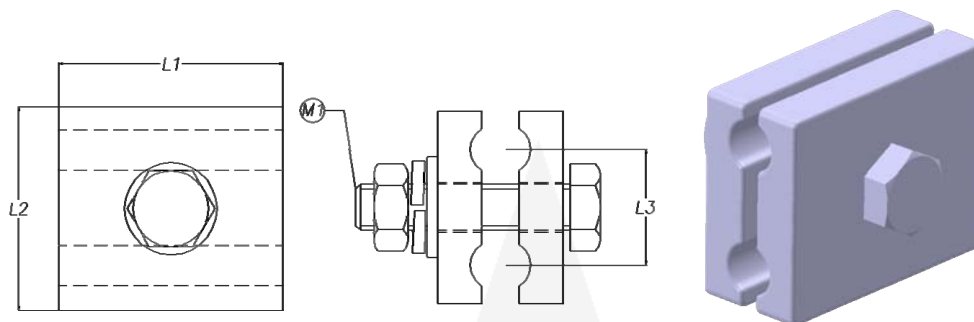


No.	Part No.	Conductor Range (mm)	Dimensions (mm)		M1	Weight (Kg)
			L1	L2		
1	TC.105.1.CA	Ø7.5-Ø12.5	40	55	12	0.3

TOWER BONDING CLAMPS

For galvanized earth wires

Type 1

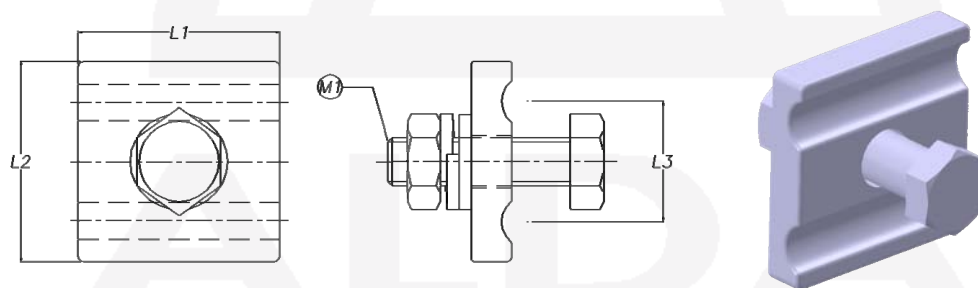


No.	Part No.	Conductor Range (mm)	Dimensions (mm)			M1	Weight (Kg)
			L1	L2	L3		
1	PG.80.80.ST	Ø7.5 ~ Ø12.5	50	50	30	12	0.4

TOWER BONDING CLAMPS

For galvanized earth wires

Type 2

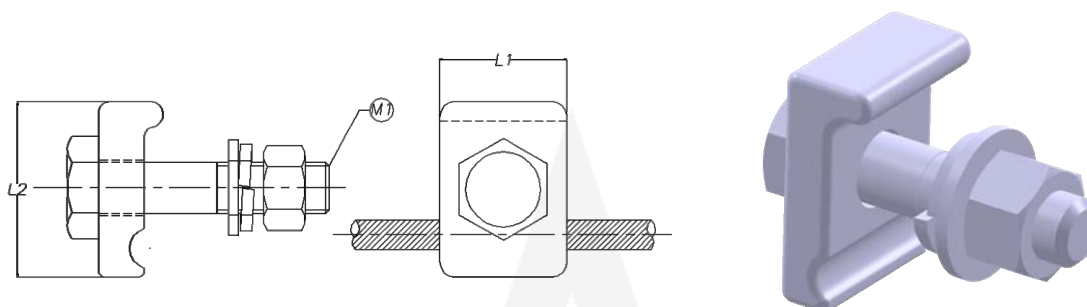


No.	Part No.	Conductor Range (mm)	Dimensions (mm)			M1	Weight (Kg)
			L1	L2	L3		
1	PG.80.80.1.ST	Ø7.5 ~ Ø12.5	50	50	29	12	0.25

TOWER BONDING CLAMPS

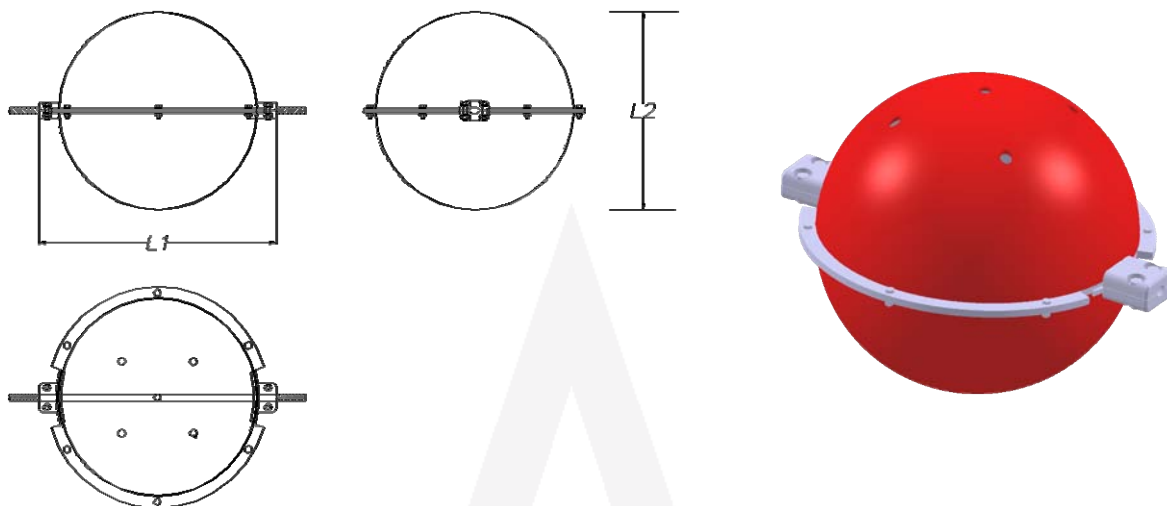
For galvanized earth wires

Type 3



No.	Part No.	Conductor Range (mm)	Dimensions (mm)		M1	Weight (Kg)
			L1	L2		
1	TC.105.1	Ø7.5 ~ Ø12.5	40	55	16	0.39

WARNING SPHERES



No.	Part No.	Conductor Range (mm)	Dimensions (mm)		Weight (Kg)
			L1	L2	
1	WB.50.10	Ø7.5 ~ Ø11	645	500	3.54
2	WB.50.15	Ø11 ~ Ø16	645	500	3.54
3	WB.60.10	Ø7.5 ~ Ø11	745	600	4.04
4	WB.60.15	Ø11 ~ Ø16	745	600	4.04

ALDA